



Continuity of Learning

The best in everyone™

Part of United Learning

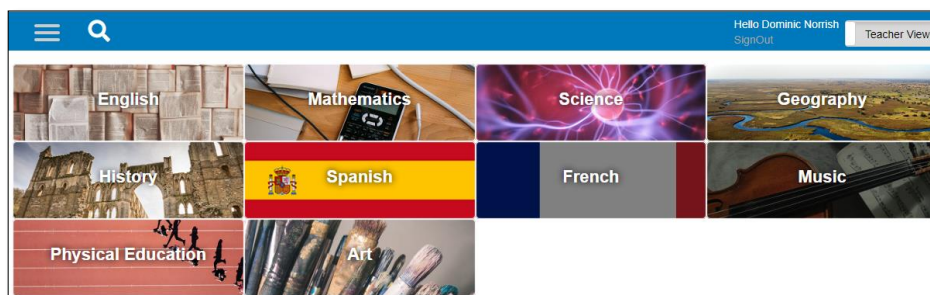
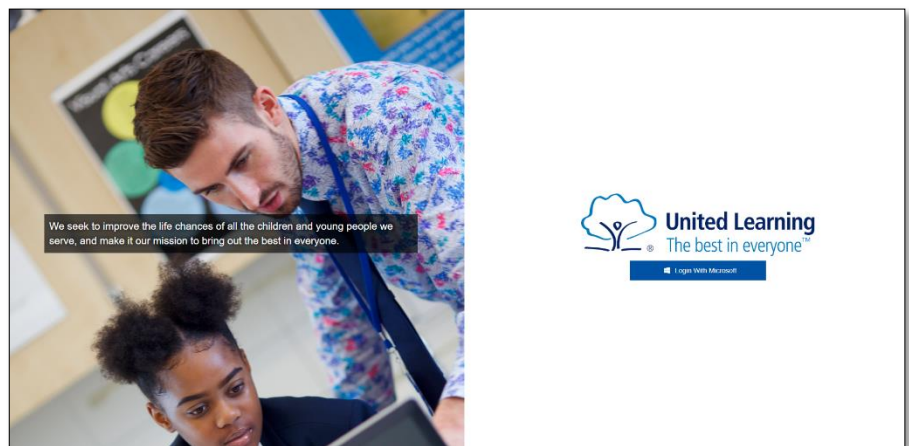
How to use the Pupil Curriculum website

You probably already know that your school is part of a national group of more than 80 schools called United Learning. The schools have come together to make online lessons for you, created by some of the best teachers in the country. Those lessons are all on this website: <https://curriculum.unitedlearning.org.uk> and your teachers will be making use of them in the work that they set you while schools are partially closed.

These instructions are to help you to log in and use the lessons on the United Learning Pupil Curriculum site.

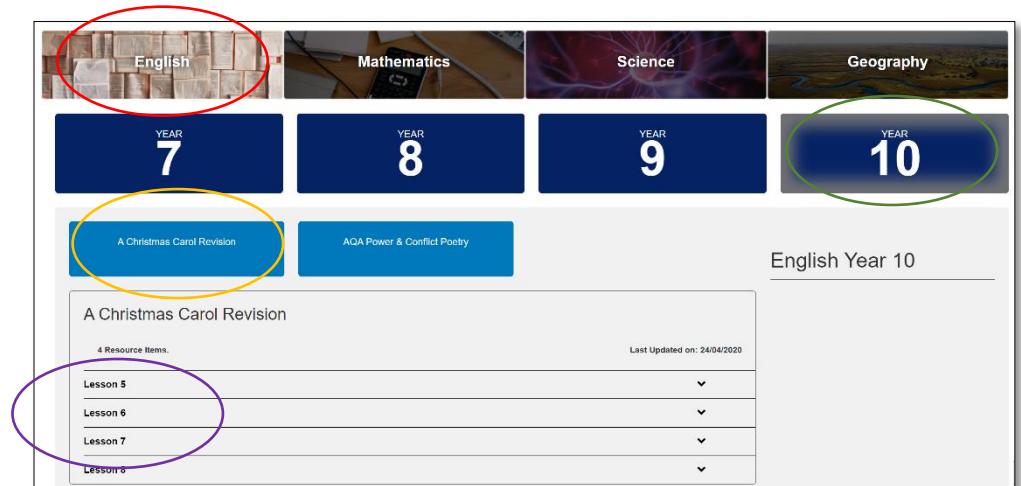
1. When you first visit the site, it will ask you to log in. Click the blue 'Login With Microsoft' button on the right and use your school email address and school password.

If you don't know your school email or need your password resetting, you will need to contact your school's IT support.



2. If you've clicked a link sent by one of your teachers, you will be taken straight to the lesson they want you to watch. If you log into the site using the address in the first paragraph above, you will see this screen, showing the subjects that have lessons for you.

3. Clicking on a **subject** expands the view to show **year groups**, then **units of work**, then individual **lessons**, as shown on the right.

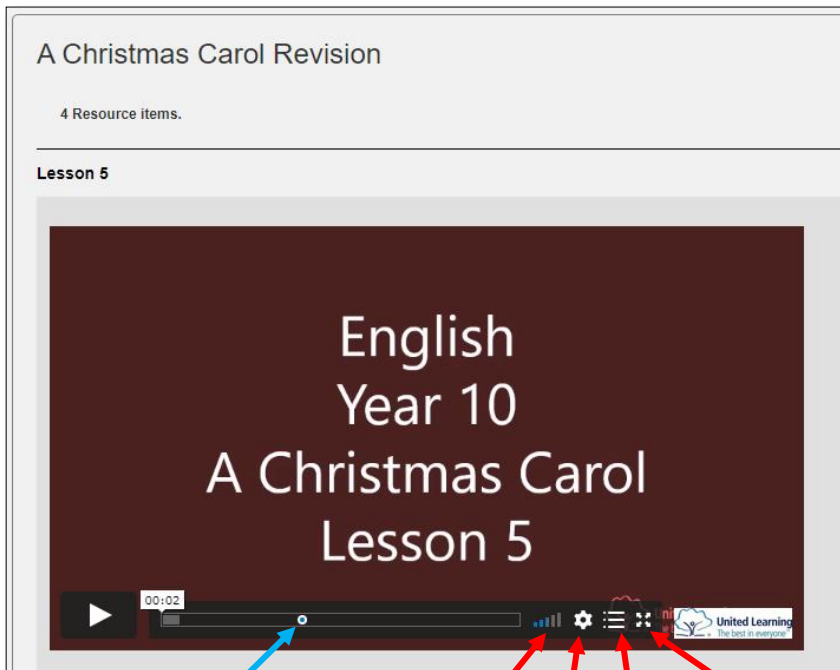




Continuity of Learning

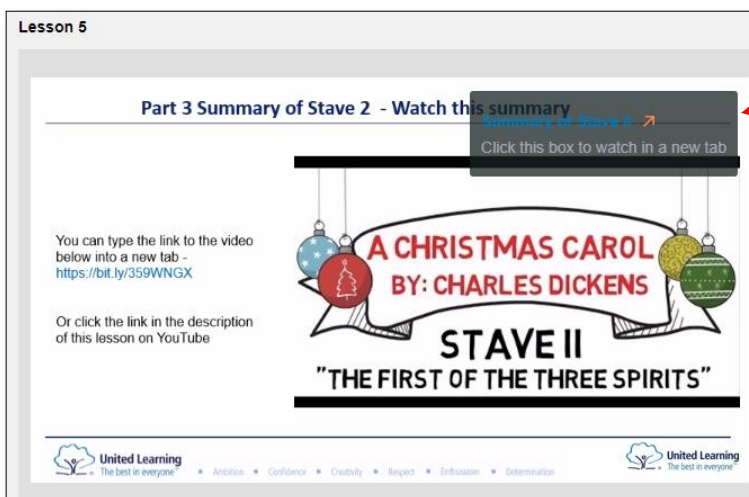
The best in everyone™

Part of United Learning



Volume Quality Chapters Full screen

Chapters are points in the lesson that the teacher wants to make it easy for you to find and jump back to. They're marked by a **blue dot** on the timeline and a full list of them can be seen by clicking the bullet-point **Chapters** icon. If your Internet connection is slow, the **Quality** setting can reduce the amount of data needed. You will get the most out of teachers' explanations if you are able to listen with headphones.



5. Sometimes in a lesson you will see a grey **card** appear in the top right corner of the video. These cards contain links to resources that the teacher wants you to use. Clicking the link in the card will pause the lesson and open a new tab with the resource in it – this could be another video, a worksheet or a quiz. When you're finished looking at the resource, you can return to the lesson tab in your browser, un-pause the video and keep watching the lesson.

General tips:

- If watching a lesson on your phone, hold it landscape (sideways) so that the video is as large as possible;
- Watch the video in your phone's browser (Safari, Chrome) so that that cards and chapters can be seen;
- Remember – an advantage of video lessons is that you can re-watch things you haven't understood.